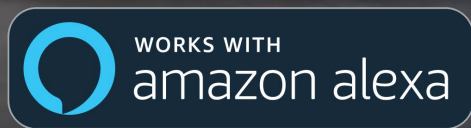



Optoma

Alexa Setup Guide



You may use this SETUP GUIDE or download the SmartProjection App. Open App and select Alexa Setup Guide.



 Get the app

Contents

- Full Power Active mode
- Install USB Wi-Fi Adapter
- Wi-Fi Setup
- Alexa Setup
- Smart Home Skills

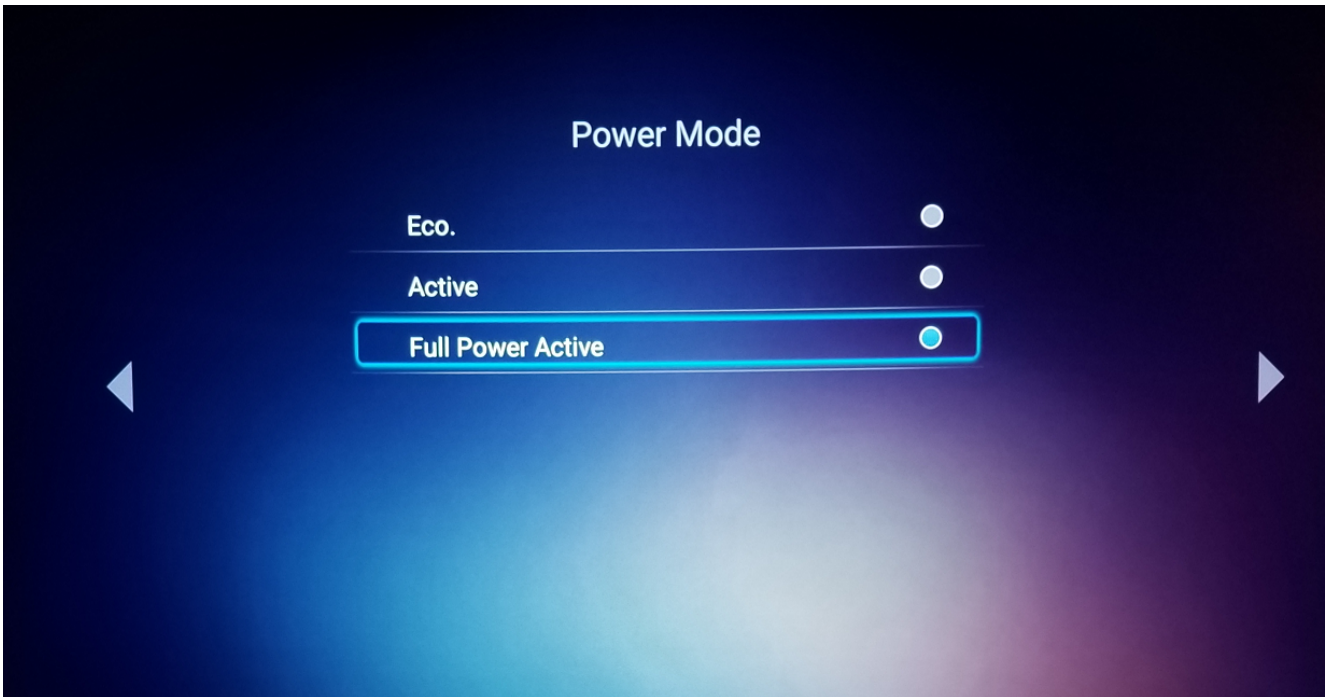
4K UHD HDR Projector – Full Power Active mode (first power-on)



Complete this step on the Projector

UHD51A/UHD51ALV ONLY for UHL55, proceed to page 5

Upon first power-on of the Projector – choose Full Power Active as the Power Mode. Full Power Active mode must be enabled to use the Alexa Power On skill command.



4K UHD HDR Projector – Install USB Wi-Fi Adapter

Insert USB Wi-Fi Adapter into port label **alexa**



Adapter appearance may vary

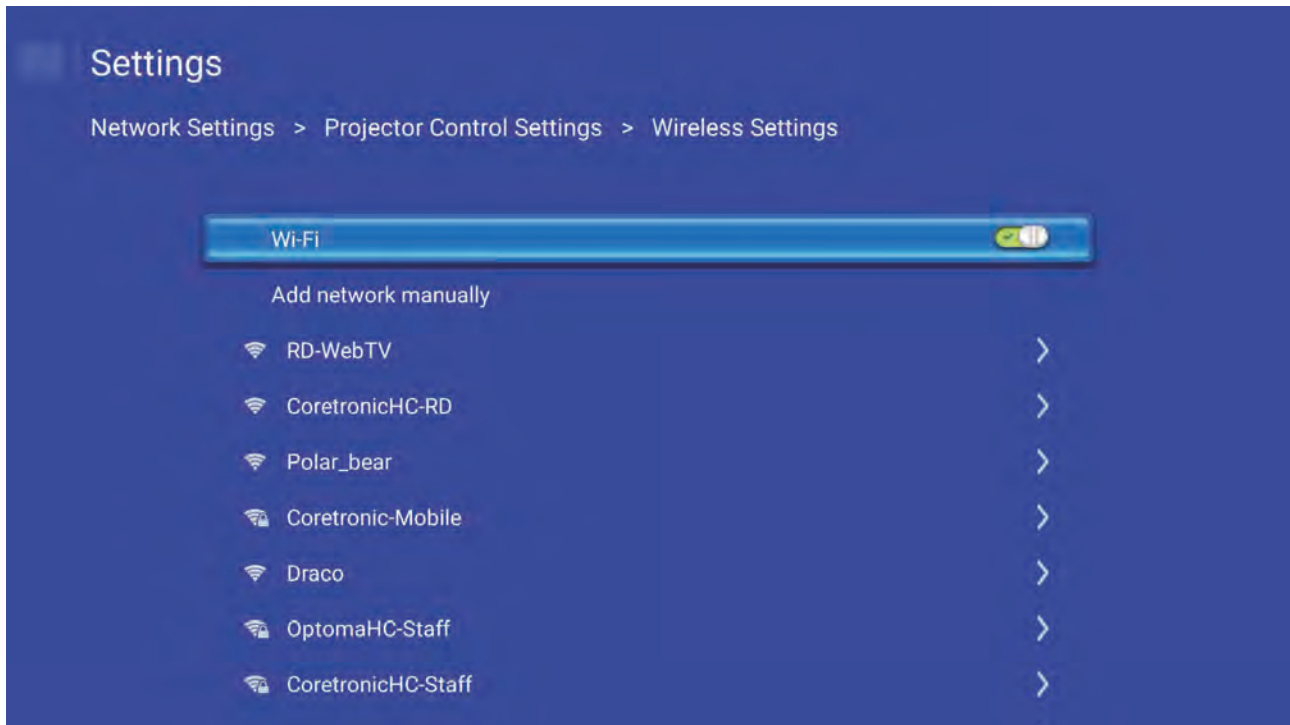
Alexa Wi-Fi Setup



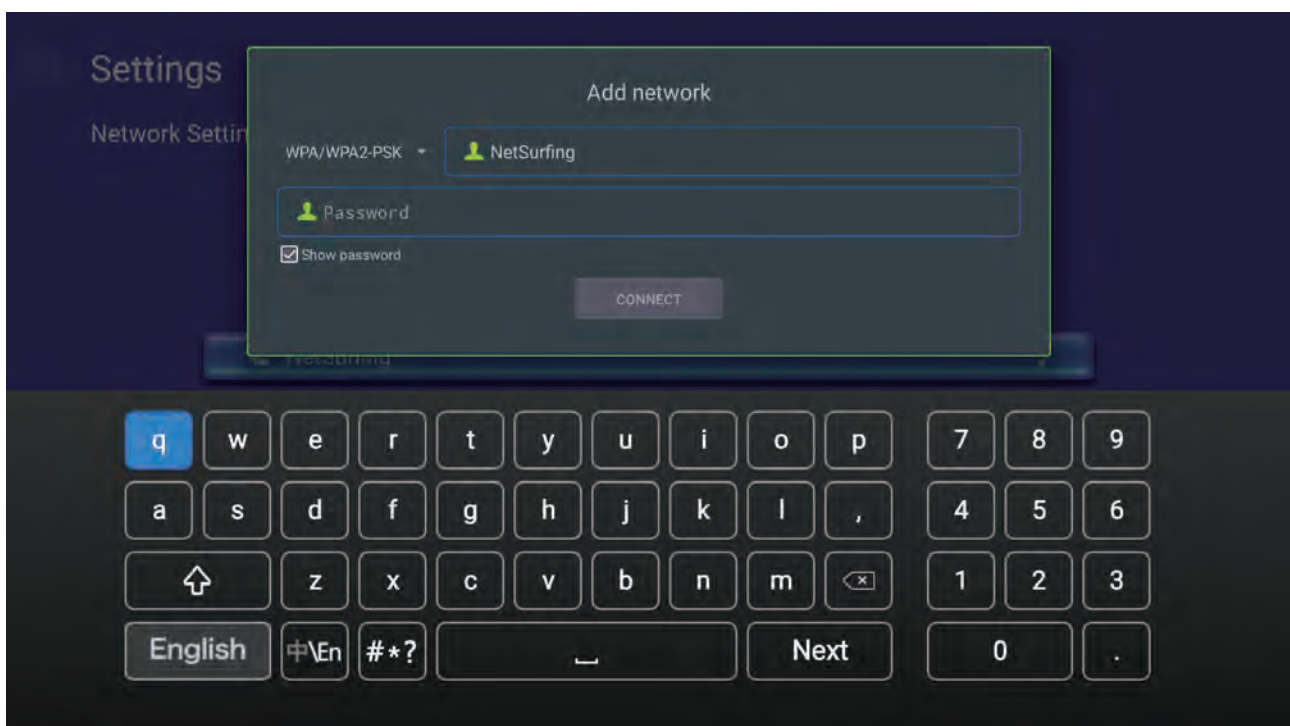
Complete this step on the Projector

UHD51A/UHD51ALV ONLY for UHL55, proceed to page 5

- Power on projector using the Power Button (located on top of projector).
- On the Launcher (Home Screen) go to Settings > Network Settings > Projector Control Settings >
- Select Wi-Fi network from the list.



- Enter your Wi-Fi network password.



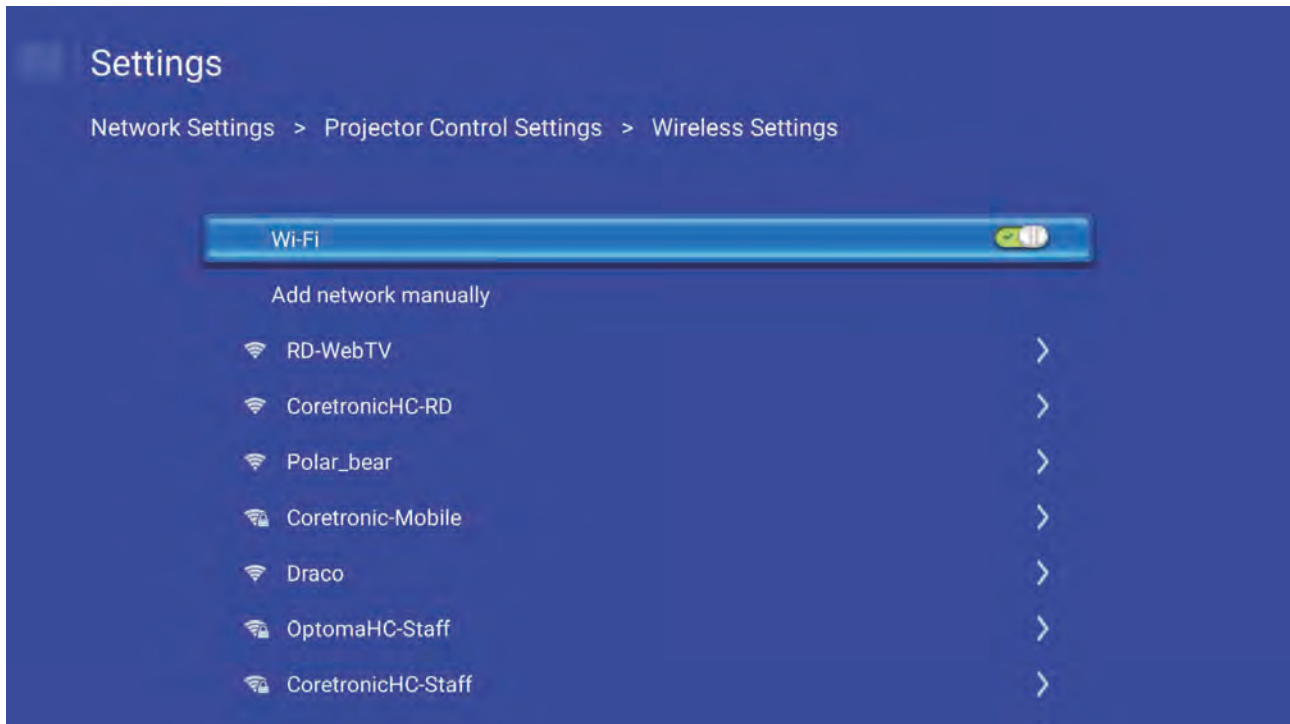
Alexa Wi-Fi Setup



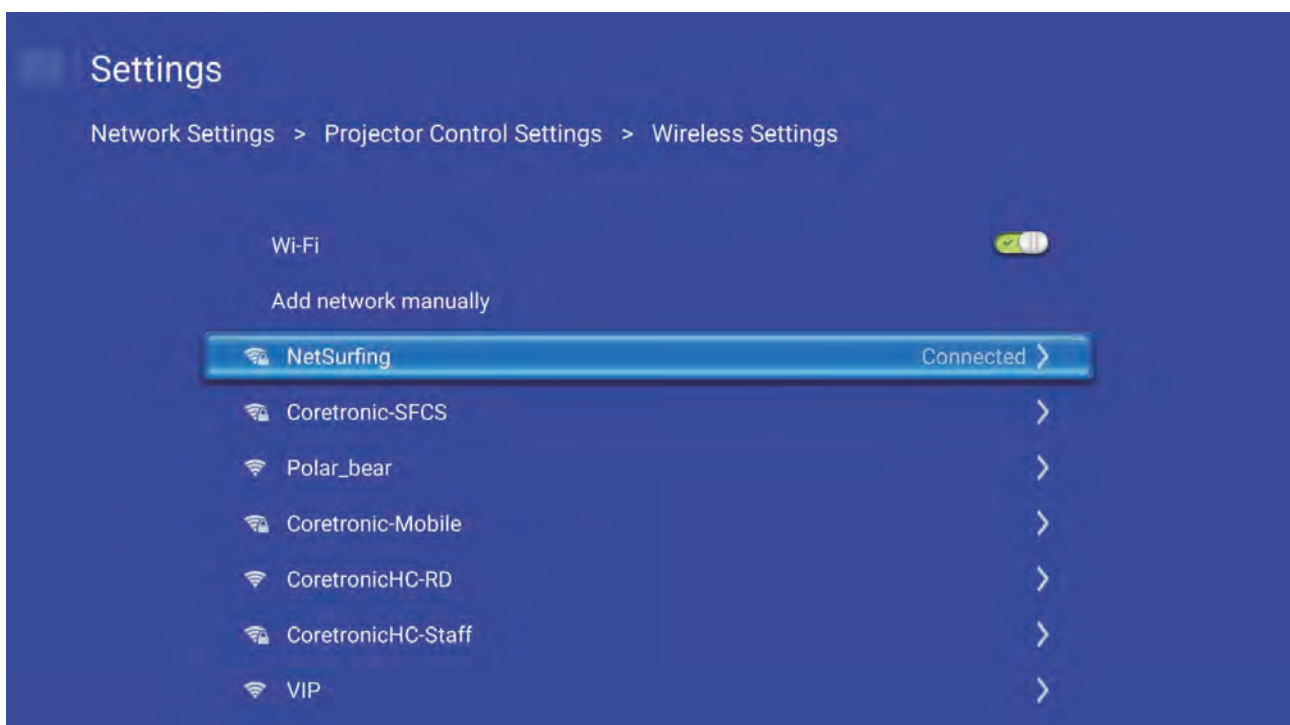
Complete this step on the Projector

UHD51A/UHD51ALV ONLY for UHL55, proceed to page 5

- Select “next” on the onscreen keyboard and then press “enter” on the remote (to select “connect”).



- Alexa Wi-Fi setup is now complete.



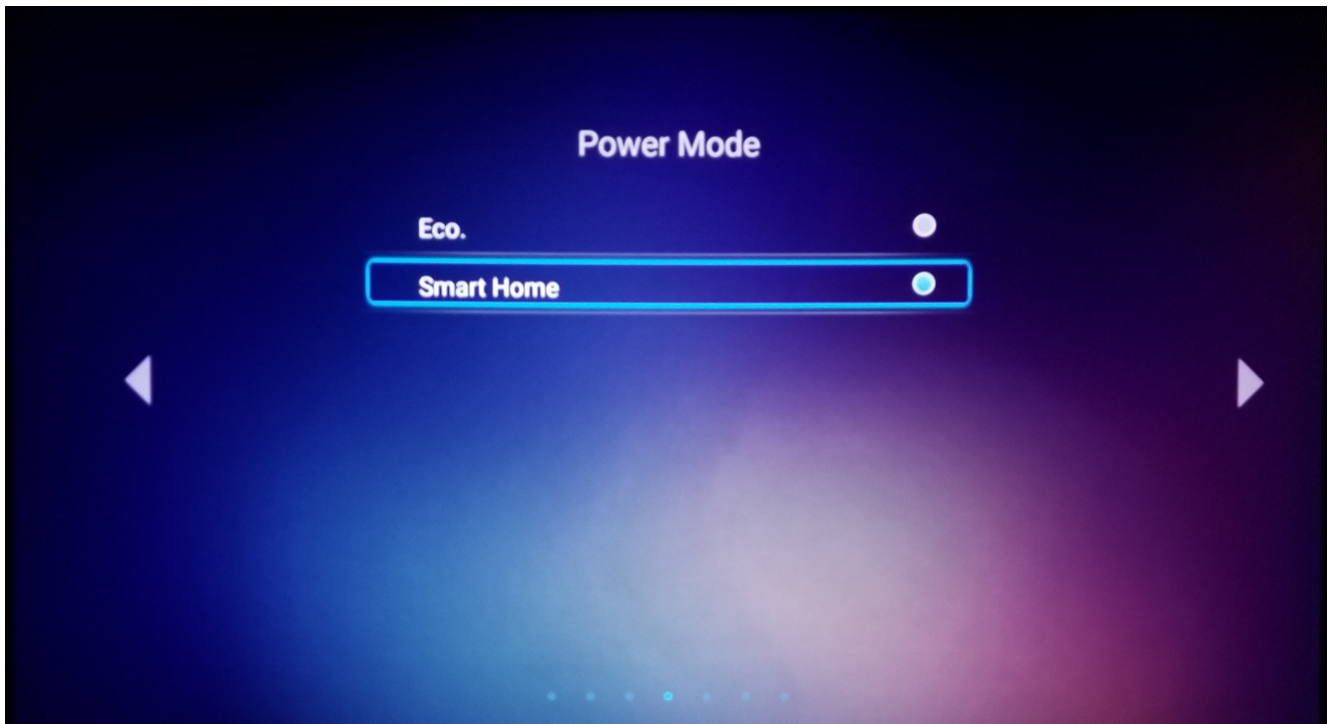
4K UHD HDR Projector – Smart Home mode (first power-on)



Complete this step on the Projector

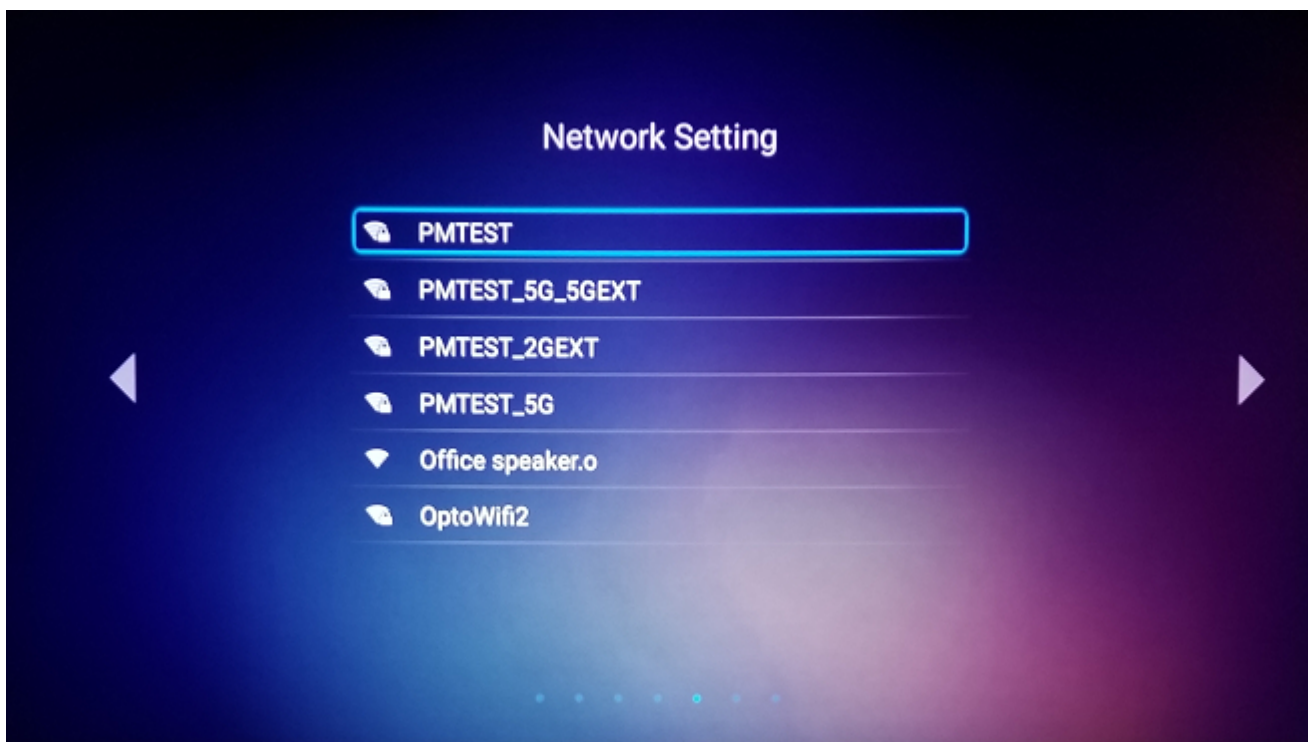
This step is for UHL55 ONLY

Upon first power-on of the Projector – choose Smart Home as the Power Mode. Smart Home must be enabled to use the Alexa Power On skill command.



4K UHD HDR Projector – Connect to Wi-Fi Network

Follow the prompts to connect to an existing Wi-Fi Network.



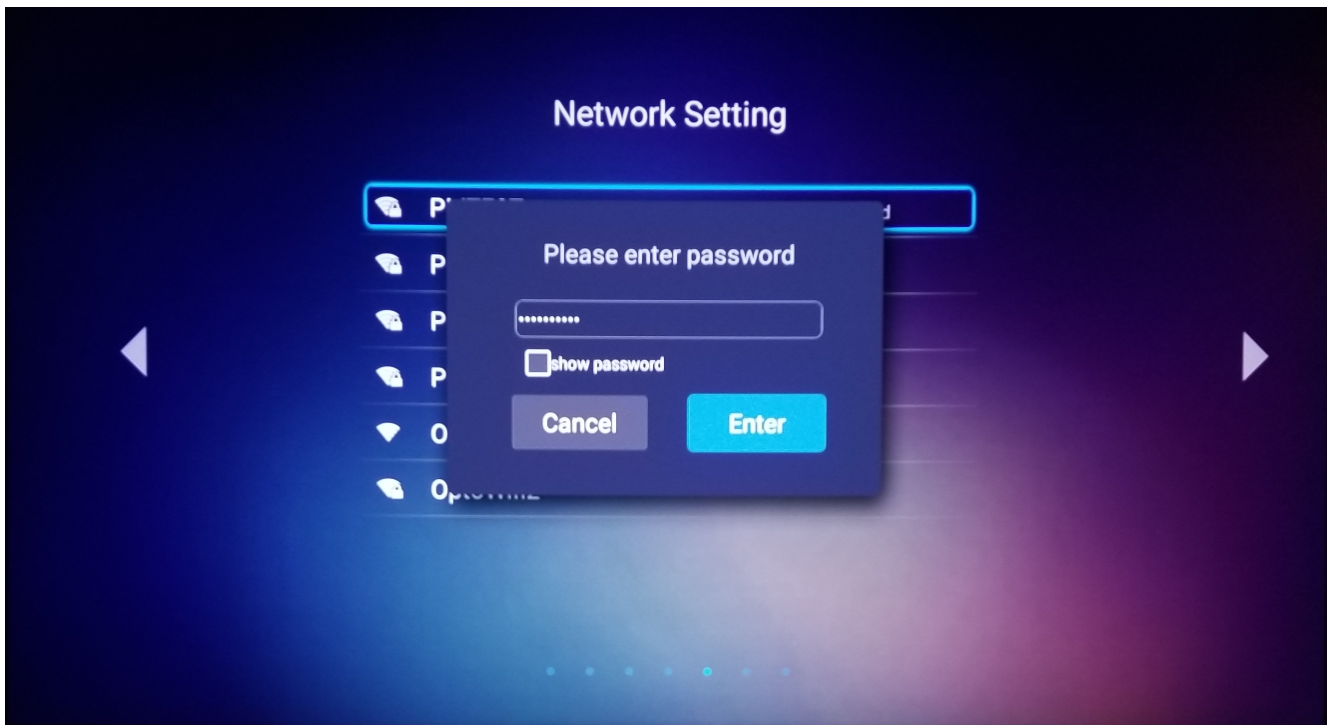
4K UHD HDR Projector – Connect to Wi-Fi Network



Complete this step on the Projector

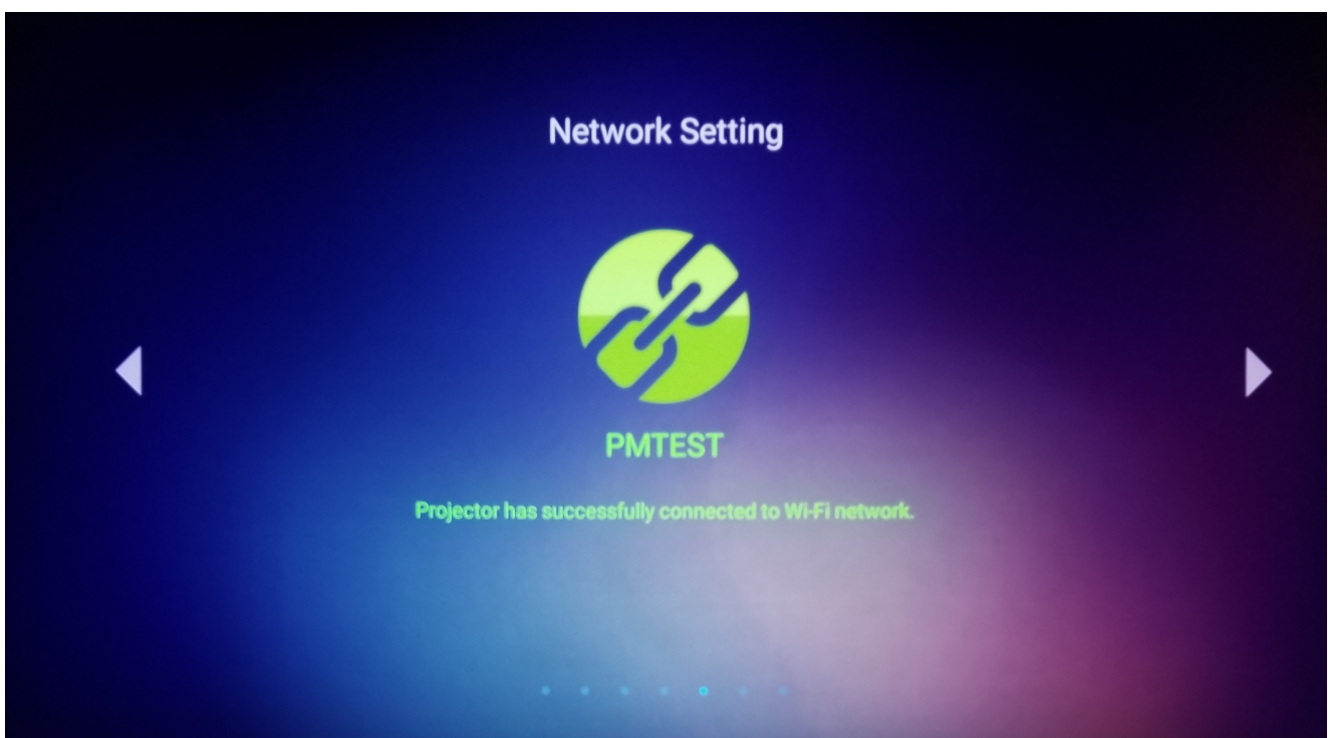
This step is for UHL55 ONLY

- Enter your Wi-Fi network password. Select “next” on the onscreen keyboard and then press “enter” on the remote (to select “connect”).



4K UHD HDR Projector – Install USB Wi-Fi Adapter

- Alexa Wi-Fi setup is now complete.



Alexa Setup

Complete this step on the Computer or Mobile Device

- **Creating an Optoma Mydevices Account**

Open a web browser and connect to Optoma Mydevices login page. Then click **New Account** to create a new account.

Note: Optoma Device Cloud URL: <https://mydevices.optoma.com> or scan QR Code Below.



Enter the Optoma Mydevices Cloud required account information and enter the authentication code in the Verify Code field.

Click Create Account to create an account. If the account registration is successful, a message will appear on the screen.




Account is created successfully.

[HOME](#)

- Check your email to complete the registration process. Once your account is set up, you can continue to log into the system.

Alexa Setup

 Complete this step on the Computer or Mobile Device

- **Registering the projector to Mydevices Cloud.**

Open a web browser and connect to Optoma Mydevices Cloud login page. Enter your user name and password, and click **LOGIN** to enter to the system.

User name:

Password:

[Forgot Password](#)

LOGIN

NEW ACCOUNT

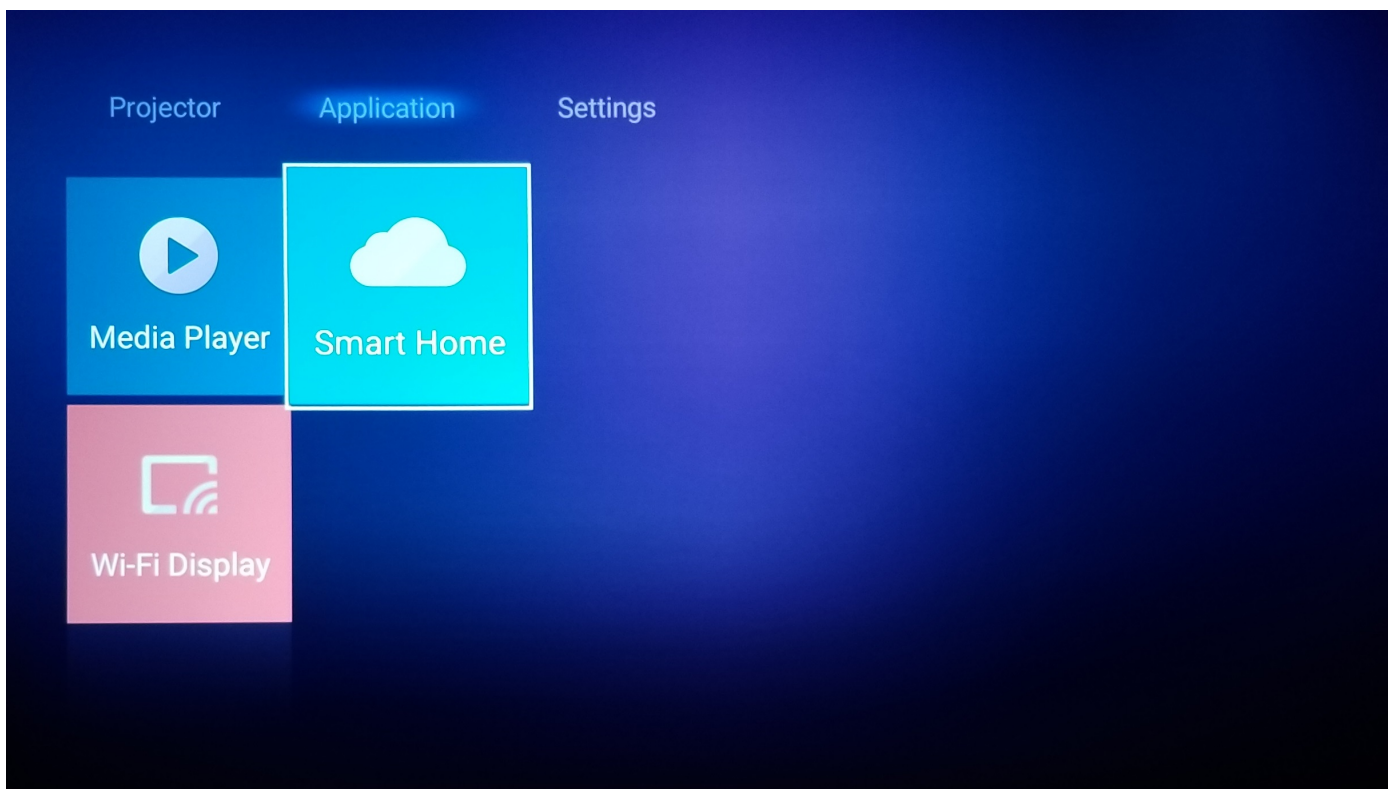
Click **Add** to add the new projector information. The following step requires the **Pair Code** data.

 + Add Device



Complete this step on the Projector

On the projector, go to **Application > Smart Home**.

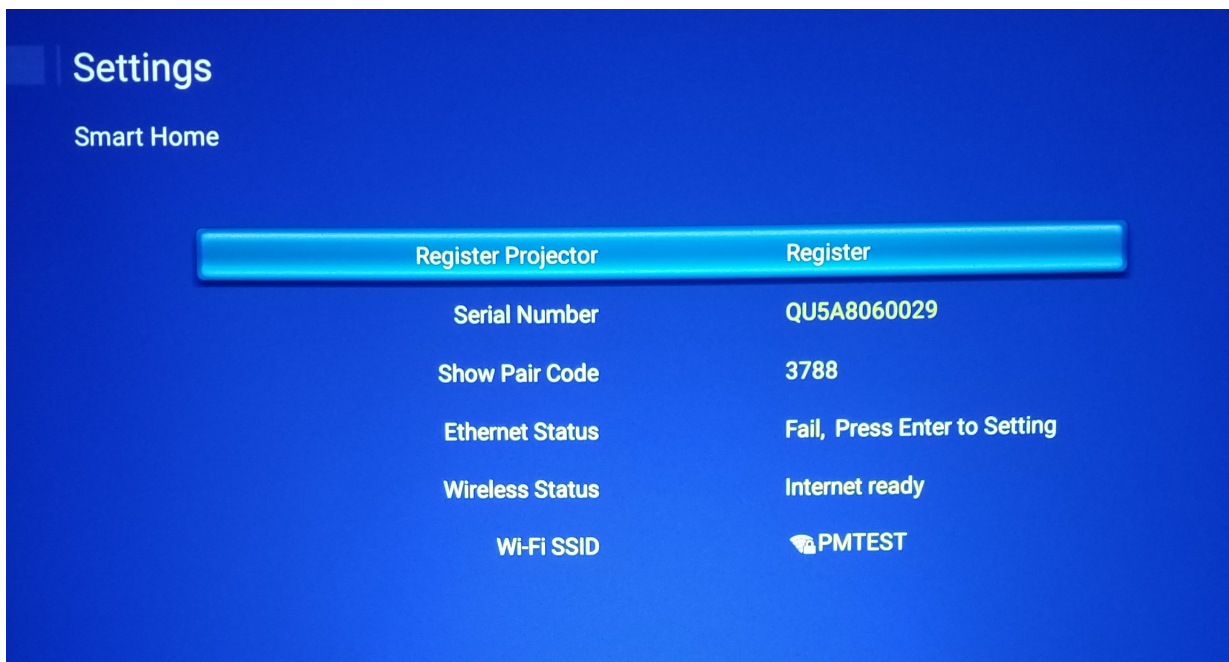


Alexa Setup

Click **Register** to obtain the 4-digit pair code from the Mydevices Cloud. After the pair code is generated, it will appear on the **Show Pair Code** field.

Note: If the pair code does not appear, please check if there is a proper network connection and repeat the above steps again.

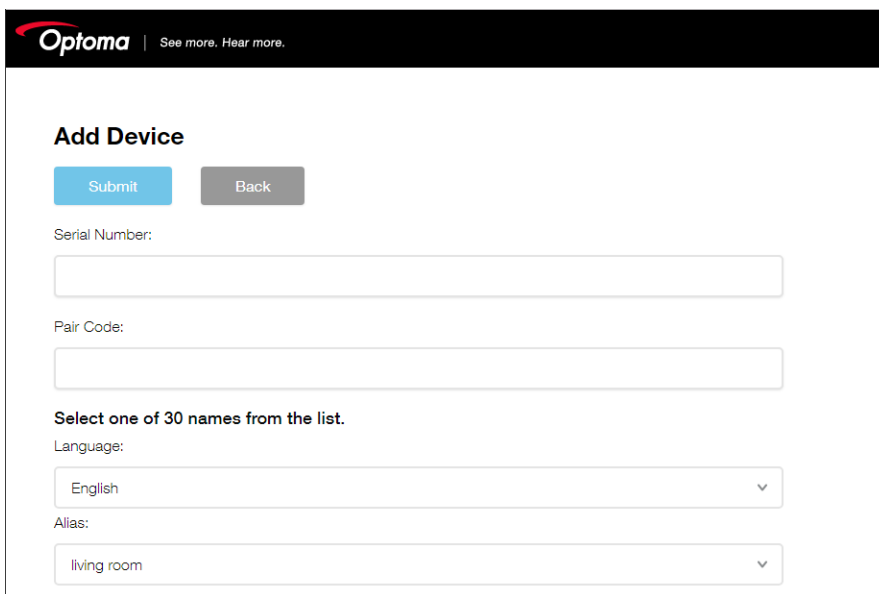
On the Optoma Mydevices webpage, enter the serial number, pair code, and choose a projector alias (name) from the dropdown list. Then click Submit to register the projector.



Complete this step on the Computer or Mobile Device

On the Optoma Mydevices webpage, enter the serial number, pair code, and projector name on its respective field. Then click Submit to register the projector.

Note: 1.The serial number and pair code information can be obtained from the Alexa Settings page.
2.The data of the "Alias" field can be changed later (if you desire).



Alexa Setup

Once the registration process is complete, the serial number and projector name (alias) will appear on the Mydevices Device page.



Device-

[+ Add Device](#)

Serial Number	Alias		
QU5A8010045	living room	Alias	Remove

To edit the information, do the following:

- Click **Alias** to change the projector name.
- Click **Remove** to delete the serial number.

Alexa Setup

Complete this step on the Computer or Mobile Device using Alexa App

The Smart Home Skill (Optoma SmartProjection for Smart Home) is available in the Amazon Alexa Skill Store.

Go to alexa.amazon.com or open Amazon Alexa App on your Android or iOS Smartphone, then login with your Amazon Account.

Select Skills from the menu on the left, then type "Optoma" in the search field.

"Optoma SmartProjection for Smart Home" will appear in the search results.

- Click "ENABLE" on the SmartProjection for Smart Home Skill.
- Log into your Optoma Mydevices Cloud Account – upon successfully logging into your Optoma Mydevices Cloud Account, you will be redirected back to the Amazon Alexa Webpage. Skill is NOW enabled.

You can continue the process via the webpage OR download and open the Alexa App on your Smartphone or Tablet.

Smart Home Skill (SmartProjection for Smart Home)

Enable Alexa skill "Optoma SmartProjection for Smarthome"

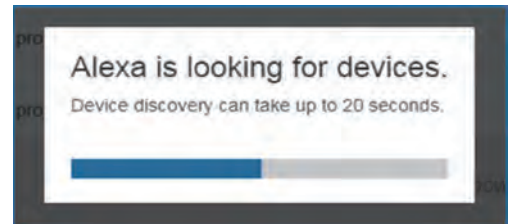
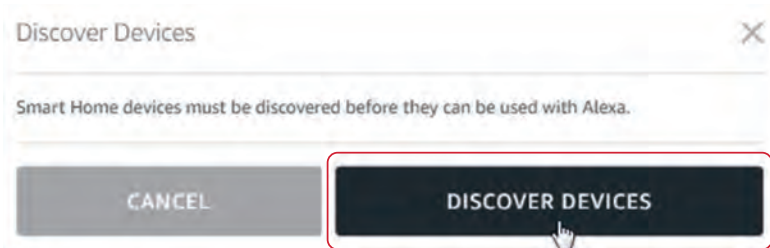
The screenshot shows the Alexa Skill Store interface. On the left is a navigation menu with options like 'Home', 'Now Playing', 'Music, Video, & Books', 'Lists', 'Reminders & Alarms', 'Skills', 'Smart Home', 'Things to Try', 'Settings', 'Help & Feedback', and 'Not Billy? Sign out'. The main content area displays the skill 'Optoma SmartProjection for Smarthome' by 'matthew ma'. It features an 'ENABLE' button and a note that 'Account linking required'. Below this, there are three 'TRY SAYING' examples: 'Alexa, turn on < projector name >.', 'Alexa, volume 8 on < projector name >.', and 'Alexa, play on < projector name >.'. The 'ABOUT THIS SKILL' section contains five numbered steps for setup, including hardware requirements, internet connection, account creation at <https://mydevices.optoma.com>, and the final 'Enable' step.

The screenshot shows a confirmation message in the Alexa app. At the top is the 'amazon alexa' logo. Below it is the Optoma logo. The main text reads: 'Optoma SmartProjection for Smarthome has been successfully linked.' Below this, it says 'What to do next:' followed by an arrow pointing to the instruction: '→ Close this window to discover smart-home devices you can control with Alexa.'

Alexa Setup

Upon successfully linking the SmartProjection for Smart Home Skill, the Smart Home Discover Devices dialog will appear.

- Click on Discover Devices – the “Alexa is looking for devices” dialog will appear.



The projector will appear as a discovered device under “Devices” under the “alias” assigned to the projector at Optoma Mydevices Cloud Webpage.

Projector is now ready to accept Alexa commands. Please see the supported Alexa Smart Home commands on the following pages.

Projector – “living room”

Device Name	Device ID	Action
living room	Optoma Projector - (QU5A8060037)	Forget
room light	Wi-Fi Smart Plug, connected via TP-LINK Kasa	Forget
Hallway	Nest Thermostat: Hallway in Home	Forget
Harmony Hub	Logitech Harmony Hub	Forget
Light	LIFX Color 1000	Forget
Bedlight	LIFX Color 1000 BR30	Forget
Light	Wi-Fi Smart Plug, connected via TP-LINK Kasa	Forget

Showing 7

Discover Forget All

Alexa Smart Home Skills

- "Alexa, turn on living room"
- "Alexa, turn off living room"
- "Alexa, raise volume on living room"
- "Alexa, lower volume on living room"
- "Alexa, change volume to 8 on living room" (volume range is 1-10)
- "Alexa, change input to HDMI 2 on living room"
- "Alexa, change input to HDMI 1 on living room"
- "Alexa, change input to multimedia on "living room" (takes you to home screen).
- "Alexa, change input to VGA on living room"



4K UHD/1080p USB Media Player commands

*The "play" command is the only command that can be used from the Home Screen or while using another input. Using the play command while using HDMI 2 (for example) will result in a change of input - playback will begin.

**Next, Previous, FF, REW, Stop, Pause and Start Over commands can only be used during playback of media content and or while the 4K UHD HDR Media Player is open.

- "Alexa, play on living room" (playback will begin with FIRST file on the USB disk/drive).
- "Alexa, pause on living room"
- "Alexa, stop on living room"
- "Alexa, next on living room"
- "Alexa, previous on living room"
- "Alexa, fast forward on living room"
- "Alexa, rewind on living room"
- "Alexa, start over on living room" (playback current file from the beginning).